

SIGNATURE

DATE

Putting Pen to Paper: Drawing a Rough Sketch of Your Property

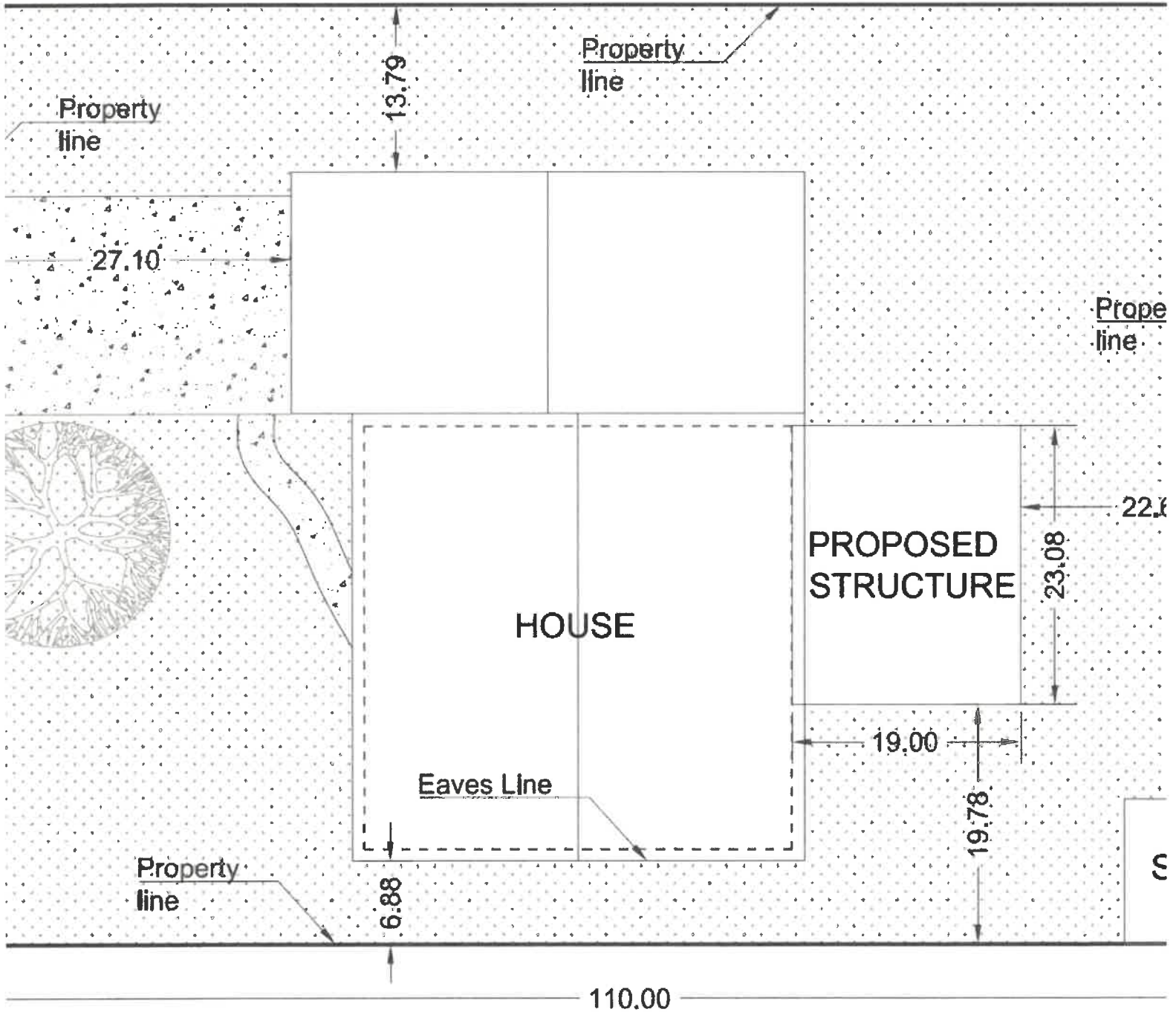
An essential step, both for your own planning and to get village approval, is to draw a site plan. A site plan shows your property line and key information such as buildings, setbacks, lot line, etc. At this stage, you are going to draw in the major elements like building footprints, driveways, significant adjacent features, etc.

Start by sketching out your property lines. Measure your property lines and mark them accordingly. Then add any existing structures (porches, decks, sheds, pools). Focus on the basic shape. You don't need to worry about the inside floor plan, you just need to capture the footprint and whether it is one story or two stories. Also, note special features like porches, and exterior stairways.

See the samples attached...

Example

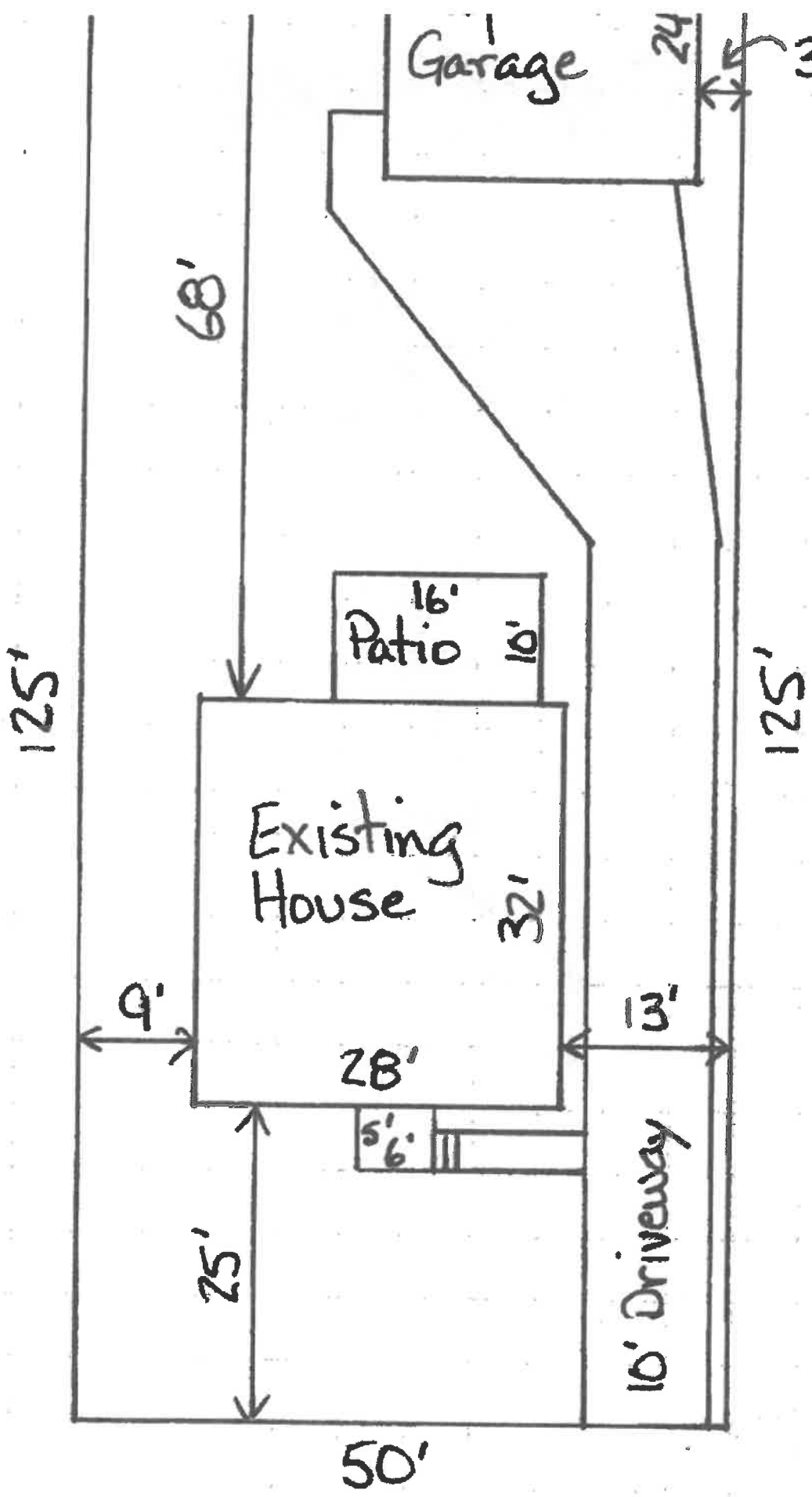
110.00



110.00



Example



1235 S. Main St.

Example

